

# Agenda

## MEETING OF THE COMMUNITY SERVICES COMMISSION

**Wednesday, August 19, 2015, 6:00 P.M.**  
Community Services Commission Meeting

**City Council Chambers  
1 Civic Center Drive  
San Marcos, CA 92069**

\*\*\*\*\* JAY FRANKLIN, CHAIR \*\*\*\*\*

IT IS THE DUTY OF THIS COMMISSION TO ADVISE AND MAKE RECOMMENDATIONS TO THE CITY COUNCIL PERTAINING TO THE CREATION, OPERATION, MAINTENANCE, AND MANAGEMENT OF COMMUNITY PROGRAMS AND FACILITIES. THE SEVEN MEMBERS ARE APPOINTED AND EMPOWERED BY THE CITY COUNCIL TO HAVE JURISDICTION OVER PUBLIC PARKS, PLAYGROUNDS, AND RECREATIONAL FACILITIES OPERATIONS.

PUBLIC SPEAKERS SHALL HAVE THE RIGHT TO ADDRESS THE COMMISSION ON ANY AGENDA ITEM BEING CONSIDERED.

NO ACTION WILL BE TAKEN ON ANY ITEM UNTIL PLACED ON AN AGENDA AND DUE NOTICE GIVEN.

\*\*\*\*\*

**CALL TO ORDER  
PLEDGE OF ALLEGIANCE  
ROLL CALL**

\*\*\*\*\*

STAFF RECOMMENDATION

### ORAL COMMUNICATIONS

### COMMUNITY LEADERSHIP

Recognition of individuals and/or groups that positively impact San Marcos' recreational and social services.

**RECOGNIZE**

### CONSENT CALENDAR (Items 1-3)

#### 1. APPROVAL OF MINUTES

Commission Meeting of July 15, 2015.

**APPROVE**

#### 2. PROGRAM STATISTICS

Consider participation statistics for July 2015.

**APPROVE**

**COMMUNITY SERVICES COMMISSION**  
**AUGUST 19, 2015**  
**PAGE 2:**

**3. GENERAL FACILITY SCHEDULING**

Use Requests – General Scheduling

Consider representative slate of activities for  
August 20 – September 16, 2015 facility and park use.

**APPROVE**

**REPORTS AND OTHER BUSINESS**

4. Trails Advisory Committee Appointment

**APPOINT**

5. San Marcos Girls Softball

**NOTE & FILE**

6. Drones and Aircraft Report

**UPDATE**

7. GIS Presentation

**NOTE & FILE**

8. Trail Committee Meeting Notes for August

**NOTE & FILE**

9. Open Space at Orchid & Santa Barbara

**NOTE & FILE**

10. Turkey Trail Trot

**DISCUSS & ADVISE**

11. Invitation to Education Forum

**NOTE & FILE**

**CURRENT PARK PROJECTS**

1. Richmar Park

Recommendation of staff preferred "Concept Alternative 1"  
and receive input from the community and confirm final  
approval for park design.

**APPROVE**

**ORAL COMMUNICATIONS**

Report from the Community Services Director

**NOTE & FILE**

**WRITTEN COMMUNICATIONS**

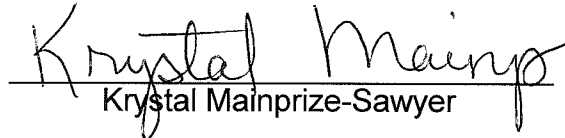
**ADJOURNMENT**

STATE OF CALIFORNIA)  
COUNTY OF SAN DIEGO) ss.  
CITY OF SAN MARCOS)

**AFFIDAVIT OF POSTING**

Agenda packets are available for public inspection 72 hours prior to scheduled meetings at the Community Services Department located at the Community Center, 3 Civic Center Drive, San Marcos, during normal business hours. Any agenda-related writings or documents provided to a majority of the commission after distribution of the agenda packet are available for public inspection at the time of distribution in the Council Chambers. I, Krystal Mainprize-Sawyer, Community Services Secretary, City of San Marcos, hereby certify that I caused the posting of this agenda on the bulletin board at the entrance of the City Council Chambers on Thursday, August 13, 2015.

Date: August 13, 2015

  
Krystal Mainprize-Sawyer

The City of San Marcos is committed to making its programs, services and activities accessible to individuals with disabilities. If you require accommodation to participate in this meeting or any other City programs, service or activity, please contact the City Clerk's office at 1 Civic Center Drive, San Marcos, CA 92069-2949, or call (760) 744-1050.

**CITY OF SAN MARCOS  
COMMUNITY SERVICES  
COMMISSION MINUTES  
1 Civic Center Drive  
Wednesday, July 15, 2015**

**CALL TO ORDER**

Chair Franklin called the meeting of the San Marcos Community Services Commission to Order at 6:04 pm.

Chair Franklin led the Pledge of Allegiance to the Flag.  
Krystal Mainprize-Sawyer took Roll Call.

**Members Present**

CRAIN	(5/7)	72%	6:06
FRANKLIN	(7/7)	100%	
LINDSAY	(7/7)	100%	6:11
MAAS	(7/7)	100%	
MOCKUS	(6/7)	86%	
TOWSLEY	(6/7)	86%	
SMITH (Alt)	(7/7)	100%	

**Members Absent**

**STAFF PRESENT**

MAINPRIZE-SAWYER, MALAN, MARTIN, VINLUAN.

**ORAL COMMUNICATIONS**

**COMMUNITY LEADERSHIP**

None

**CONSENT CALENDAR**

Commissioner Mockus asked for a correction on page 5 of the minutes second paragraph to state "Commissioner Mockus commented with" instead of "Commissioner Mockus asked for" as previously stated.

**MOVED BY COMMISSIONER TOWSLEY, SECOND BY MOCKUS, AND  
CARRIED TO UNANIMOUSLY APPROVE CONSENT CALENDAR ITEM 1-3  
AS WITH THE STATES CORRECTIONS. COMMISSIONER CRAIN  
ABSTAINED FROM ITEM #1 THE MINUTES.**



**REPORTS AND OTHER BUSINESS**

4. San Marcos Youth Baseball Report

Molly Carpenter, Vice President and Registration Secretary for San Marcos Youth Baseball (SMYB) gave the commission an update on their youth program. Currently all practice and games are curtailed as the City is performing necessary maintenance on the fields. SMYB does provide the City with annual turf payments totaling around \$15,000 a year, their lighting bill is about \$80,000 per year and the player fees that go to the City are about \$20,000 a year. They play a spring season from January – June with about 1,000 kids equaling 75 teams, from kindergarten through 9<sup>th</sup> grade. Fall season runs from late August through the week of Thanksgiving. This season only has about 500 – 600 kids because the youth are playing other sports like soccer.

Approximately 84% of players are San Marcos residents and this year they were able to open the boundaries because Pony Baseball allowed this. They didn't notice much fluctuation in the residency percentage and the out-of-area kids were coming from Vista and Oceanside where they only offer Little League. The older kids wanted to play on our fields and play Pony because they like the rules better.

At the end of the recreation season they sent 14 teams to Pony All Star Tournaments which are held all over San Diego County. One of their teams is in the Regional Round and another team in the Super Region. They both are hoping to advance to the World Series and two other teams are playing in the Pony World Series next weekend.

SMYB hosts about six or seven tournaments a year at Mission Sports Park. The tournaments help the local businesses as well as helps with league revenue. One very exciting event coming up is Home Run for Chelsea through the Chelsea's Light Foundation. SMYB was selected to be the host organization and location for the tournament. It is an annual event that moves to a different park each year and they expect about 100 teams to participate on September 26<sup>th</sup> & 27<sup>th</sup>. Last year's event raised over \$20,000 for the Chelsea's Light Foundation. It is a great way to showcase Mission Sports Park and get SMYB known.

**COMMUNITY SERVICES COMMISSION  
CITY OF SAN MARCOS  
JULY 15, 2015  
PAGE THREE:**

Upgrades needed at the park include better drainage for the fields because some fields can't even handle a few hours of rain. Lighting for the batting cages is also important to allow time for all participants. A recent concern has been security around the park. Cars have been broken into on the surrounding streets and they would like to work with the Sheriffs Department and the City to have some patrol on the weekends when they have large crowds and street parking is necessary.

Chair Franklin thanked Molly for her report and noted it is awesome to have Chelsea's Light Tournament here in San Marcos. Franklin asked how the turf is holding up. Molly noted it is in good shape as they are very particular about what's not allowed on the turf. They are looking to expand turf on field 4 and 7 they just need the funds to do that.

Commissioner Crain thanked Molly for her volunteerism and noted his son has played with SMYB since he was in kindergarten and he's now going into 5<sup>th</sup> grade and he has had an awesome experience. Mission Sports Park is a world class facility and Crain's son also plays with a travel team for SMYB and his coaches are great. Crain has heard from the community that the extra turf would be nice and he has heard from several people the turf should be in the outfield instead of the infield. The volunteers at SMYB do an outstanding job of maintaining the facilities and fields. Parking is a big issue and wonders if the City and Vallecitos Water District can get involved in providing overflow parking for the tournament weekends. Crain noted many other sports tournaments charge for parking.

Commissioner Towsley asked what registration trends they have seen in the past three years. Molly noted she can only speak to the last year and half but they have noticed a big increase in the 7-8 year old age group. This year both the 9-10 and 11-12 divisions were up from the previous years.

Commissioner Towsley asked how they inform the local businesses of the tournaments. Molly said they have a sponsorship director who notifies all of the league sponsors with the tournament dates and information. They have plenty of contact with the businesses in Grand Plaza and other recreational businesses like the trampoline park and they also invite the businesses to come to the tournaments to promote their business. Towsley noted we are trying to find a way to alert the local restaurants of these tournaments so they are prepared. Towsley asked if they have been in contact with the Sheriff's Department about the break-ins. Molly noted the president of SMYB is aware of the issue and she is not sure if he has had contact with the Sheriff's but she knows some of the individuals whose cars were broken into did file police reports.

**COMMUNITY SERVICES COMMISSION  
CITY OF SAN MARCOS  
JULY 15, 2015  
PAGE FOUR:**

Commissioner Crain noted we had commercial batting cages in town that closed down and now Big Fly Athletics located here so we only have one facility near San Marcos High School. Crain feels it's important to upgrade the batting cages at the park because there is really nowhere else for the kids to practice.

Staff noted last year he met with the president of SMYB and addressed some of the concerns at Mission Sports Park. One of the concerns is drainage which he has been dealing with since the day he started with the City. We have on numerous occasions met on site and looked at what can be done collaboratively. A company volunteered their time to shoot the location for SMYB and so we are waiting for the next step. The City did a walkthrough for lighting the batting cages and the City electrician asked that we install the correct equipment so the City can properly maintain it in the long run. Musco Lighting did an evaluation and determined there was no way to refocus the lighting or add additional lamps to the current posts. The only option is to add an additional post with lights. This cost for both batting cages was estimated at \$35,000.

Commissioner Crain asked if the City ever thought about having coin operated batting cages. Molly noted machines are not used in the batting cages because they are expensive machines and the league does not allow them plus one of the cages does not have electricity.

Staff noted he will speak with the Sheriff's Department to see if they can be of assistance on busy tournament weekends. Also we can speak with Vallecitos Water District personnel to see if they would allow use of their parking lot on tournament weekends and we could compensate them in some form or fashion.

Commissioner Lindsay suggested possibly the Volunteer Park Rangers could assist with patrolling the parking at the sports tournaments.

Commissioner Maas asked if the Youth Sports Council or the City could create a tournament calendar for the next 6 months that could be given to the restaurants. Staff noted we have tournaments all year long and we have a tournament guide that is given to the sports groups hosting the tournament to give to their participants. We can also pass this information on to the Chamber to alert their business members.

**COMMUNITY SERVICES COMMISSION  
CITY OF SAN MARCOS  
JULY 15, 2015  
PAGE FIVE:**

**5. 4<sup>th</sup> of July Fundraising Report**

Holly Malan gave the Commissioners an update on the 4<sup>th</sup> of July fundraising. Holly thanked the Committee and all the volunteers who helped and it came together in the end as it usually does. The fireworks show costs \$20,000 and then another \$5,000 is needed for ancillary expenses which are listed on the budget sheet provided. New this year was the GoFundMe Campaign which brought in \$700 with \$600 of that total from new donors. We had 225 total donors this year raising \$27,137. We have \$3,655 in pledges and \$3,000 of this is from SDG&E. The event went well. We had a large crowd again this year and everyone had fun.

Chair Franklin thanked Holly for her hard work and noted year after year we keep getting better and better. Franklin thanked Commissioner Towsley for her work in orchestrating the GoFundMe implementation.

Staff thanked Holly for all her hard work and the Commissioners for their volunteer time and participation with the event.

**6. Drones and Aircraft Report**

Staff noted in the past four days we have received a lot of information from Susan Vandrew Rodriguez in the Planning Department as she oversees the EIR issues. She has informed us that we have some real challenges with the site we are proposing for the designated flying of aircraft. Bradley Park has a Master Plan that has been approved by the Council and if we were to designate an area at this site, it would only be allowed temporarily. Staff asked for the Commission to be patient as they gather more information so we can make a recommendation to the Commission next month.

Chair Franklin asked for this item to come back at the next meeting.

**7. Committee Representation Rotation Schedule**

Staff noted we will need a Commissioner to cover the November 3<sup>rd</sup> Youth Sports Council Meeting and a Commissioner assigned to each of the September and November Trails Advisory Committee meetings. Commissioner Towsley can attend the September Trail meeting and Commissioner Maas can attend the November meeting. Commissioner Smith will attend the Youth Sports Council Meeting in November.

**COMMUNITY SERVICES COMMISSION  
CITY OF SAN MARCOS  
JULY 15, 2015  
PAGE SIX:**

**8. Trails Advisory Committee Minutes**

Commissioner Lindsay requested the people present at the meeting be listed on the meeting minutes along with the name of whomever submits the minutes.

**9. Open Space at Orchid & Santa Barbara**

Commissioner Towsley noted in a neighborhood at the top of Santa Barbara and Orchid streets there is an open space area that needs to be cleaned up. The area has a lot of trash, items potentially dangerous to children such as rusty poles and metal sticking out. Staff noted we will discuss this with Public Works to see whose easement this is and Public Works and Community Services will address this issue.

Commissioner Maas is glad Commissioner Towsley raised this issue because there is also quite a bit of trash around the Discovery Lake area. Maas would like to involve Discovery Elementary School in a cleanup day.

**10. Turkey Trail Trot**

Commissioner Towsley attended the Trails Advisory Committee meeting in May and one idea they came up with to promote the trails in San Marcos was a Turkey Trot. Turkey Trots are usually a 5K or 10K and they become a family tradition and a big event. What was discussed was the idea of holding Turkey Trail Trot on Thanksgiving morning and a 5K trail route could be mapped out.

Even though Oceanside holds one, Commissioner Mockus said it would be nice to have something nearby.

Commissioner Crain said the high schools could possibly have a trail model we could mirror. Staff noted there was an 10K event held by one of the high schools and the cross country coach. Staff can bring it up to the Friends Board to see if they are interested in taking the lead in doing this event.

Commissioner Crain noted we also have a world famous track coach at CSUSM.

**COMMUNITY SERVICES COMMISSION  
CITY OF SAN MARCOS  
JULY 15, 2015  
PAGE SEVEN:**

**ORAL COMMUNICATIONS**

Report from the Community Services Director:

Staff noted it is Parks Make Life better month as proclaimed by the City Council last night. We are promoting our Parks and Recreation programs this month. A large event coming up is the Triple Crown Sports Tournament at Bradley Park as well as the California State Games at Walnut Grove Park.

Staff noted we have had some changes in our caretaker program over the last six months because of some legislation that has changed as far as real estate laws are concerned. Originally we had 13 parks with caretakers and now we will have eight. At the recent City Council meeting, the San Marcos Historical Society chairperson voiced her concerns with eliminating the caretaker at Walnut Grove Park. That mobile home at Walnut Grove is over 30 years old and so it was recommended not to replace that facility. There is another facility in that park above the sports barn so the plan is to put a caretaker in there.

Commissioner Crain asked which parks have caretakers and which parks have caretakers that have been removed. Staff noted Bradley Park currently has a caretaker who can remain there until May 2016. Woodland Park no longer has a caretaker and a private security company does patrols in the evening. Walnut Grove does not have a caretaker but will eventually once the sports barn upstairs unit is occupied.

Holly Malan reminded commissioners of the Education Forum being held at St. Augustine on September 16<sup>th</sup> which will be in place of the regularly scheduled Commission meeting.

Commissioner Crain noted last night the four club-soccer programs got together for the first time. Everyone was civil and they were able to hash out usage for various fields for the upcoming season. Crain thanked the City for proposing that and getting them all together.

Commissioner Maas noted when she first moved to Discovery Hills there was a caretaker for Lakeview Park and now the gate is not being locked at night. She has driven by the park several times at night and in the summer at least one or two cars are parked in the parking lot around 11pm or midnight. She has also seen an increase in beer can litter and has also seen people walking with beer to the lake. Maas is concerned and realizes there is a cost to have someone open and close the park but maybe the City could start ticketing people parked after hours which may deter people from parking there.

**COMMUNITY SERVICES COMMISSION  
CITY OF SAN MARCOS  
JULY 15, 2015  
PAGE EIGHT:**

Staff noted he understands Commissioner Maas concerns and he recently had a coordination meeting with Public Works and Real Property Services. The experiment of leaving the gates open at Discovery Lake changed during the summer once the young people found out the gates weren't being closed. Three days a week the Park Rangers will lock the park gates. A maintenance company that comes in the morning will unlock the park we just need to make sure they are at the park early enough because if the gates aren't open we will have upset park visitors.

Commissioner Maas gives the City huge kudos for the specialty camp program that her daughter attended. She learned cooking terms, they actually cut food items, and she came home and cooked for her family and she is only 8 years old!

Commissioner Smith thanked Holly and Gina for the 4<sup>th</sup> of July fundraising and everyone enjoyed the music and the fireworks display at the event. Smith thanked Commissioner Towsley for setting up the GoFundMe and noted it should really bring in a lot of funds next year as it is an easy way to donate. Smith noted the Turkey Trail Trot sounds like a lot of fun and if we could incorporate a fundraising aspect for a local food bank, that would be a nice theme.

Commissioner Mockus gave kudos to the City and all the volunteers who assisted with the 4<sup>th</sup> of July. It was an awesome time at Bradley Park as usual. It seemed like there were more people this year. Mockus noted the Mulberry Park field is looking really bad and just two months ago it was looking so great. This grass area there is the one place where organized sports aren't allowed and many people play informally with their families.

Towsley would love to be part of the planning and organization of the Turkey Trail Trot efforts.

Commissioner Lindsay missed the fireworks as he was volunteering up at Double Peak Park and the fog set in and they were busy directing traffic. Lindsay asked about the Parks Master Plan and asked to see the prioritization of future parks and trail connectivity. Lindsay is curious as what the next steps are. Staff noted they held their last community meeting which was with the Chamber board members. The consultant and City staff will input the information provided to us from the community meetings pertaining to what the types of amenities the community is looking for. We will then brief the City Manager and the City Council on what is being proposed. We will also develop a request for proposal for the financial component which will tell how we will pay for the proposed amenities.

**COMMUNITY SERVICES COMMISSION  
CITY OF SAN MARCOS  
JULY 15, 2015  
PAGE NINE:**

Commissioner Lindsay is specifically interested in City owned land and how it will be identified for parks along with the details of mapping out trail connectivity. Staff noted this document is an enhanced document from the 1990 Master Park Plan and so we already have the parks planned that we have the ability to develop. There is no new acreage of land that has been identified at this time.

Commissioner Towsley noted that Commissioner Maas had mentioned the GIS presentation shown at the Trails Advisory meeting and feels it would be beneficial for the Commission to see that presentation. Staff noted he will reach out to the GIS staff and see if they would be available to come to the Commission meeting.

Chair Franklin thanked everyone very much for their work on the fireworks committee and for their awesome ideas and making this Commission such a proactive Commission. Chair Franklin suggested having a QR code for GoFundMe on the donation boxes for next year.

Chair Franklin asked that the Commission packet and information be as correct and current as possible because the Commission makes recommendations to the City Council. For any item that needs to be approved by the Commission Franklin asked for it to be stated on the agenda as "Approve" so they know action will be required from them.

Chair Franklin asked when the Richmar Park update will come back to the Commission. Staff noted Engineering met with the landscape architect who said they could not have the plans ready until the August meeting.

**WRITTEN COMMUNICATIONS**

None.



COMMUNITY SERVICES COMMISSION  
CITY OF SAN MARCOS  
JULY 15, 2015  
PAGE TEN:

ADJOURNMENT

CHAIR FRANKLIN ADJOURNED THE JULY 15, 2015 SAN MARCOS  
COMMUNITY SERVICES COMMISSION MEETING AT 7:37 P.M.

APPROVED:

\_\_\_\_\_  
JAY FRANKLIN, CHAIR  
COMMUNITY SERVICES COMMISSION

ATTEST:

\_\_\_\_\_  
KRYSTAL MAINPRIZE-SAWYER, SECRETARY  
COMMUNITY SERVICES COMMISSION

## Community Services Monthly Program Statistics July 2015

Service Areas/Division	Estimated # of Different Participants	Number of Meetings	Total Number of Entrances 2015	Total Number of Entrances 2014	Total Entrances % Variance	Notes
<b>Aquatics- Woodland Pool</b>	4773	101	6739	13552	-50%	1
<b>Las Posas Pool</b>	4634	90	5820	7316	-20%	2
<b>Special Events</b>	4700	1	4700	4500	4%	
<b>Sports- Adult</b>	4341	499	13016	13999	-7%	
<b>Youth</b>	563	135	3283	3321	-1%	
<b>Classes- Adult</b>	154	93	704	705	0%	
<b>Youth</b>	655	251	3069	2386	29%	3
<b>Music/Performing Arts</b>	713	2	713	400	78%	4
<b>Youth- Preschoolers</b>	200	46	2180	2140	2%	
<b>Camps</b>	200	23	4600	4200	10%	
<b>Special Events</b>	81	5	122	104	17%	
<b>Seniors- Services &amp; Meals</b>	383	130	4025	3449	17%	
<b>Programs/Classes</b>	323	236	6430	10295	-38%	5
<b>Trips</b>	118	14	118	124	-5%	
<b>Indoor Facility Use</b>	4220	72	4842	4023	20%	
<b>Outdoor Facility Use</b>	2310	42	2410	2265	6%	
<b>Nature Center/Hikes</b>	309	14	309	113	173%	6
<b>Total</b>	28,677	1,754	63,080	72,892	-13%	

### Comments

1. Woodland Pool does not have any swim lessons scheduled at the pool this year.
2. Las Posas Pool total attendance is down however the Open Rec Swim numbers have increased from last year.
3. We offered more Youth Specialty Camps this summer and they were well attended.
4. We offered an additional free concert this year in July. We only offered a free concert in August in 2014.
5. The Senior Center now has a system in place to more accurately account for class and program totals. The numbers previously reported were perhaps best guess estimates.
6. The Nature Center had two reservations last year and we had three reservations this year.

**Facility Use List  
Representative List  
August 20 – September 16, 2015**

**Community Center**

<b>Date</b>	<b>Event</b>	<b>Time</b>	<b>Room</b>
Thursday, August 20	SMYB	6:00 – 8:00 p.m.	Conference
Friday, August 21	UC Davis Farm Advisor	7:30 a.m. – 5:00 p.m.	Main Hall
Friday, August 21 & September 4	Susie Dance	6:15 – 9:00 p.m.	Meeting
Saturday, August 22	AYSO	8:00 a.m. – 4:00 p.m.	Dining
Saturday, August 22 & September 12	<b>American Red Cross*</b>	8:30 a.m. – 5:00 p.m.	Arts & Crafts
Sunday, August 23, 30 September 6, 13	<b>Community Lutheran Church*</b>	8:00 a.m. – 12:00 p.m.	All Rooms
Tuesday, August 25	SM Girls Softball	6:00 – 9:00 p.m.	Conference
Wednesday, August 26	Crop Production Services	7:30 a.m. – 3:30 p.m.	Main Hall
Wednesday, August 26	InBiz Latino	5:00 – 8:00 p.m.	Dining
Thursday, August 27	American Red Cross	11:30 a.m. – 2:00 p.m.	Dining Room
Thursday, August 27	NC Safe Routes to School	12:00 – 4:30 p.m.	Main Hall
Saturday, August 29	Grandparents Raising Grand Children	7:00 a.m. – 3:00 p.m.	All Rooms
Sunday, August 30	Bodhi Hill Buddhist Center	1:00 – 8:00 p.m.	Main Hall
Friday, September 4	City IGP Workshop	8:00 a.m. – 2:30 p.m.	Main Hall
Saturday, September 12	Hula Luau	11:00 a.m. – 10:00 p.m.	Main Hall
Monday, September 14	Theater West Auditions	5:00 – 8:00 p.m.	Main Hall
Tuesday, September 15	Rock Church	6:00 – 9:00 p.m.	Main Hall
Tuesday, September 15	Victoria Ranch HOA	6:30 – 8:30 p.m.	Dining Room
Wednesday, September 16	COSM Respect Graduation	4:30 – 8:00 p.m.	Main Room
Wednesday, September 16	Rancho Santalina HOA	6:00 – 8:00 p.m.	Dining Room

**Barn**

<b>Date</b>	<b>Event</b>	<b>Time</b>	<b>Room</b>
Saturday, August 22	Perales Wedding	3:00 p.m. – 12:00 a.m.	Barn
Sunday, August 23	Jones Wedding	8:00 a.m. – 4:00 p.m.	Barn
Friday, August 28 & September 11	Whirlaways	6:30 – 10:30 p.m.	Barn
Saturday, August 29	Palomar Square Dance	6:30 – 10:30 p.m.	Barn
Sunday, August 30 & September 13	Vallecitos Spurs	7:00 a.m. – 5:00 p.m.	Arena
Saturday, September 5	Knight Wedding	2:00 – 11:00 p.m.	Barn
Saturday, September 12	Sosa Wedding	12:00 – 11:00 p.m.	Barn
Saturday, September 12	American Trail Horse Assoc.	7:00 a.m. – 3:00 p.m.	Arena

### Senior Center

Date	Event	Time	Room
Thursday, August 20	Greenwood HOA	6:00 – 7:30 p.m.	Crafts
Thursday, August 20	Palomar RC Flyers	7:00 – 9:15 p.m.	Main Room
Thursday, August 20	Bahais of SM	7:00 – 9:00 p.m.	Community
Sunday, August 23, 30 September 6, 13, 20	<b>Mission 3:16 Church*</b>	8:00 a.m. – 1:00 p.m.	All Rooms
Sunday, August 23 & 30 September 6, 13, 20	Scoot n Weavers	1:00 – 4:00 p.m.	Fitness
Tuesday, August 25	Twin Oaks Valley Ranch	5:45 – 8:00 p.m.	Community
Tuesday, August 25 September 8 & 5	<b>Music Men*</b>	6:00 – 10:00 p.m.	Horizon Room 3
Tuesday, August 25 September 1, 8 & 15	<b>Bridge</b>	6:00 – 9:00 p.m.	Main Room
Tuesday, August 25 September 1, 8 & 15	<b>Quilting</b>	11:00 a.m. – 9:00 p.m.	Crafts Room
Wednesday, August 26 September 2, 9, 16	<b>San Diego Church*</b>	7:00 – 9:00 p.m.	Main Room
Thursday, September 3	Scoot n Weavers	7:00 – 9:00 p.m.	Fitness
Tuesday, September 8	San Marcos Girls Softball	6:30 – 9:00 p.m.	Community
Wednesday, September 9	Belleza HOA	5:45 – 8:00 p.m.	Community
Wednesday, September 9	Autumn Heights HOA	6:00 – 8:30 p.m.	Crafts
Saturday, September 12	Intergenerational Fun Day	8:00 a.m. – 3:00 p.m.	Main
Monday, September 14	CWONC	6:00 – 8:30 p.m.	Main Room
Monday, September 14	Vallecitos Prop	7:00 – 8:30 p.m.	Crafts

### Wood House

Date	Event	Time	Room
Saturday, August 22	Concert	7:30 p.m.	Jenny lind & Grounds
Saturday, September 5	Tea Party	2:00 – 4:00 p.m.	Jenny lind
Saturday, September 12	Concert	7:30 p.m.	Jenny lind & Grounds
Wednesday, September 16	SM Woods HOA	7:00 – 10:00 p.m.	Jenny lind

\*On-Going Facility Use

# Reservation Master Report

PARKS

Aug 10, 2015  
10:35 AM

Reservation Date: From ~~Aug 19~~ 8/20, 2015 through ~~Sep 15~~ 9/16, 2015

Facility Type: Amphitheater, Park Gazebo, Park Picnic Shelter, Picnic Area

Date / Setup - Ready Time / Start - End Time	Facility / Equipment / Type / Center	Event / Event Type / Schedule Type	Permit# Attend/Qty	Notes
Aug 22, 2015 Saturday 12:30 PM - 6:30 PM 1:00 PM - 6:00 PM	San Elijo Gazebo Park Picnic Shelter San Elijo Hills Park	birthday #538 Picnic w/jump house	538 50	
2:30 PM - 5:30 PM 3:00 PM - 5:00 PM	Sunset West 1 & 2 Park Picnic Shelter Sunset Park	Birthday Party #682 Picnic without jump house, ponies, etc.	682 50	
3:30 PM - 6:30 PM 4:00 PM - 6:00 PM	DP Amphitheater Park Picnic Shelter Double Peak Park	wedding #683 Picnic without jump house, ponies, etc.	683 55	
Aug 23, 2015 Sunday 8:30 AM - 1:30 PM 9:00 AM - 1:00 PM	Woodland Park Pepper Park Picnic Shelter Woodland Park	Picnic #676 Picnic w/jump house	676 50	
10:00 AM - 3:00 PM	San Elijo Gazebo Park Picnic Shelter San Elijo Hills Park	Kellan's 4th Birthday Party #671 Picnic w/jump house	671 60	
Aug 29, 2015 Saturday 9:30 AM - 6:30 PM 10:00 AM - 6:00 PM	Woodland Park West Park Picnic Shelter Woodland Park	Birthday Party #694 Picnic w/jump house	694 50	
12:30 PM - 5:30 PM 1:00 PM - 5:00 PM	San Elijo Gazebo Park Picnic Shelter San Elijo Hills Park	birthday party #669 Picnic w/jump house	669 50	
1:30 PM - 5:30 PM 2:00 PM - 5:00 PM	Woodland Park Pepper Park Picnic Shelter Woodland Park	Birthday Party #690 Picnic w/jump house	690 50	
Aug 30, 2015 Sunday 11:30 AM - 2:30 PM 12:00 PM - 2:00 PM	San Elijo Gazebo Park Picnic Shelter San Elijo Hills Park	birthday #655 Picnic w/jump house	655 50	
2:30 PM - 7:30 PM 3:00 PM - 7:00 PM	San Elijo Gazebo Park Picnic Shelter San Elijo Hills Park	Birthday Party #686 Picnic w/jump house	686 50	
Sep 6, 2015 Sunday 10:30 AM - 6:30 PM 11:00 AM - 6:00 PM	San Elijo Gazebo Park Picnic Shelter San Elijo Hills Park	Company Picnic #587 Picnic without jump house, ponies, etc.	587 50	

# Reservation Master Report

Aug 10, 2015  
10:35 AM

Reservation Date: From Aug 19, 2015 through Sep 15, 2015  
Facility Type: Amphitheater, Park Gazebo, Park Picnic Shelter, Picnic Area

Date / Setup - Ready Time / Start - End Time	Facility / Equipment / Type / Center	Event / Event Type / Schedule Type	Permit# Attend/Qty	Notes
11:00 AM - 2:00 PM	Sunset East Park Picnic Shelter Sunset Park	Birthday party Picnic without jump house, ponies, etc.	678 75	
Sep 12, 2015 Saturday 1:30 PM - 7:30 PM 2:00 PM - 7:00 PM	San Elijo Gazebo Park Picnic Shelter San Elijo Hills Park	Birthday Party #689 Picnic w/jump house	689 50	
3:30 PM - 6:30 PM 4:00 PM - 6:00 PM	DP Amphitheater Park Picnic Shelter Double Peak Park	Wedding #463 Picnic without jump house, ponies, etc.	463 75	
Sep 13, 2015 Sunday 11:00 AM - 2:00 PM	Jack's Pond Park East Park Picnic Shelter Jack's Pond Park	Luke's Birthday Picnic without jump house, ponies, etc.	9000648 50	

RS II



## EQUAL EMPLOYMENT OPPORTUNITY

\*AMERICANS WITH DISABILITIES ACT (ADA)  
FAIR EMPLOYMENT & HOUSING ACT (FEHA)  
DRUG AND ALCOHOL FREE WORKPLACE

## CITY OF SAN MARCOS

**HUMAN RESOURCES OFFICE  
1 CIVIC CENTER DRIVE  
SAN MARCOS CA 92069  
(760) 744-1050 ext. 3200**

# APPLICATION FOR EMPLOYMENT

**IMPORTANT:** Please follow these instructions exactly.

- A. ALL QUESTIONS MUST BE ANSWERED IN BLACK INK or TYPEWRITTEN.  
B. False statements or omissions are cause for rejection, removal from eligibility list, or dismissal.  
C. Avoid any reference to age, religion, politics, race or membership in fraternal order.  
D. Education and experience must reflect qualifications for position.  
E. Notify this department promptly in case of address change.

California Driver's License Number & Class		License Expiration Date	
First Name	Last Name	First Name	Last Name
Steven	LASLOVICH	Steven	M
Residence Address	Mailing Address	Home Phone	Business Phone
[REDACTED]	SAN MARCOS	[REDACTED]	92078
County	County	Zip Code	Zip Code
[REDACTED]	[REDACTED]	3/5/19	3/5/19

**SHIFTS YOU WOULD BE AVAILABLE AND WILLING TO WORK:**

- ☐ Yes ☐ No Day Shift (Typically 7:30 a.m.-5:30 p.m. or 6:30 a.m.-4:00 p.m.)
- ☐ Yes ☐ No Night Shift (Varies)

**PRE-EMPLOYMENT INQUIRES: PLEASE ANSWER YES OR NO TO ALL QUESTIONS.**

- |                              |                             |   |
|------------------------------|-----------------------------|---|
| Yes <input type="checkbox"/> | No <input type="checkbox"/> | Do you meet the minimum age requirements as stated on the job announcement? |
| Yes <input type="checkbox"/> | No <input type="checkbox"/> | Are you a U.S. Citizen? If no, please answer the next question:             |
| Yes <input type="checkbox"/> | No <input type="checkbox"/> | Do you have the legal right to work in the U.S.?                            |

IF YES TO ANY OF THE FOLLOWING QUESTIONS, PLEASE EXPLAIN IN THE SPACE PROVIDED BELOW:

- ☐ Yes ☐ No Were you ever discharged or forced to resign from any position?  
☐ Yes ☒ No Would you object to having your present employer contacted concerning your work record, qualifications, character?  
☐ Yes ☒ No Would you object to having your past employer contacted concerning your work record, qualifications, character?  
☐ Yes ☒ No Do you fluently speak a language other than English? If so, please specify below.

**\*NOTE:** There will be no consideration of race, color, sex, age, ancestry, national origin, political or religious affiliation, sexual orientation, any non-job related physical or mental disability, medical condition or other functional limitation as defined in the Fair Employment and Housing Act (FEHA) and the Americans with Disabilities Act (ADA) and other applicable State and Federal laws in any personnel activity. Applicants requiring alternate means of testing must contact Human Resources staff by the filing date for any accommodations required.

APPLICANTS MAY BE SUBJECT  
TO PRE-EMPLOYMENT DRUG TESTING

Position Title	TRAILS ADVISORY COMMITTEE			
Date Received	By	Date Notified	By	
FOR OFFICE USE ONLY				
EDUCATION AND TRAINING				
High School Graduate or Possess G.E.D.?	<input checked="" type="checkbox"/> Yes	<input type="checkbox"/> No		
Circle highest Grade Completed:	8	9	10	11 12
High School Attended:	EL CAMINO		Location: SOUTH SAN FRANCISCO	
NAME OF SCHOOLS ATTENDED	MAJOR (Do not abbreviate)	*Credit Units Completed	*Degree or Cert. Received	Did You Graduate?
Trade/Vocational			Type	Year
Junior College				
College/Universities				
CSU FRESNO	PHYSICAL THERAPY		BS	79
BOSTON UNIV	PHYSICAL THERAPY		DPT	
ROCKY MTN UNIV	HEALTH PROMOTION	ABD	PHD	NOW

**\*\* IF DEGREE OR CERTIFICATE IS REQUIRED FOR THIS POSITION, A COPY MUST BE ATTACHED TO THE APPLICATION.**

Please indicate whether units are		Semester	Quarter
1	2		
3	4		
5	6		
7	8		
9	10		
11	12		
13	14		
15	16		
17	18		
19	20		
21	22		
23	24		
25	26		
27	28		
29	30		
31	32		
33	34		
35	36		
37	38		
39	40		
41	42		
43	44		
45	46		
47	48		
49	50		
51	52		
53	54		
55	56		
57	58		
59	60		
61	62		
63	64		
65	66		
67	68		
69	70		
71	72		
73	74		
75	76		
77	78		
79	80		
81	82		
83	84		
85	86		
87	88		
89	90		
91	92		
93	94		
95	96		
97	98		
99	100		

Other training you received: (For example, special courses, work training program and/or military training). Please estimate the number of training hours you received.

Certificates or Licenses of Professional or Vocational competence:

**EXPERIENCE:** Begin with your most recent job. List all jobs and any periods of unemployment in the last ten years. Also list jobs beyond ten years if the experience helps to qualify you for the position. Include paid or unpaid, full or part-time, military, summer jobs, etc. Please attach an extra sheet if necessary. **This section must be fully completed. A resume may be attached, but may not be substituted for completion of this section.**

[illegible]

**PERSONAL REFERENCES:** Give the names, home and business addresses of the three persons who have knowledge of your character, experience and ability. Do not give names of relatives or supervisors listed above. Please list any other names by which references would know you.

Full Name	Home Address (Street Number, City, State)	Business Address (Street Number, City, State)	Business/Occupation	Phone Numbers
				Home Work
				Home Work
				Home Work

**READ VERY CAREFULLY:**

Certification of Applicant: All answers and statements in this document are true and complete to the best of my knowledge and belief. I have read and meet the specific requirements listed on the announcement for this position. I understand that untruthful or misleading answers are cause for rejection of my application, removal of my name from an eligibility list or dismissal from City employment.

I understand that I may be requested to submit proof of qualification at a later date. If, upon checking these, the City determines that I do not meet specific requirements, I understand that I will be disqualified.

I understand that the City may wish to verify the accuracy of the information contained in my application. I hereby authorize the City to obtain information regarding my work history, references, education or training, and criminal history, including driving record. I understand that the City has a right to obtain any criminal history information. I am aware that fingerprinting may be required after employment.

Jul-14

Signature:

Date:

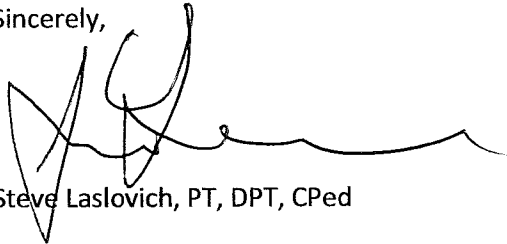


August 5, 2015

From: Steve Laslovich, (Applicant for TAC)

I was asked to provide a one paragraph statement on my reasons for wanting to volunteer for the San Marcos Trails Advisory Committee. As both a resident of San Elijo for the past 4 years and actively employed in San Marcos for the past 6 years, I am a very frequent user of the trails throughout the city and thus see enormous value in the trails system. Therefore I would like to give back to the trails system by volunteering to help in fulfilling the mission of the TAC in any way possible. Additionally, my profession as a health care provider and avid researcher in physical activity and vascular health allows me to see the trails system as a vital component of the San Marcos Community and the health of its residents. Again, it is my desire to provide volunteer assistance to the development of the trails system as needed. Thank you for your consideration of membership on the TAC.

Sincerely,

A handwritten signature in black ink, appearing to be 'Steve Laslovich', written over a horizontal line.

Steve Laslovich, PT, DPT, CPed

Assistant Professor  
University of St. Augustine for Health Sciences  
700 Windy Point Drive, San Marcos, Ca 92069

Home Address:  
1167 Festival Road  
San Marcos, Ca 92078  
email: slaslovich@usa.edu  
Cell: 760 994 3576

**August 13, 2015**

**TO: COMMUNITY SERVICES COMMISSION**  
**FROM: RON VINLUAN, RECREATION SUPERVISOR/RANGER**  
**RE: REMOTE CONTROL/DRONE UPDATE**

- How it began- Doc Zimmer, a local remote control enthusiast, approached the city in March 2015 about the possibility of designating a remote control (RC) site. City staff researched other cities that allow RC.
- Staff thought the undeveloped dirt area at upper Bradley Park was a venue in San Marcos that could possibly accommodate RC activity & have the least challenges due to its openness and distance from any surrounding residents. The San Marcos Park Ordinance states that the Director would have to approve such use or issue a valid Park Use Permit.
- After visiting the site, Doc felt that Bradley Park (upper dirt area) wasn't large enough. Doc had wanted to use both the dirt field and the grass field. Grass fields are utilized by youth and adult sports groups.
- In 2012, there had been a public workshop for the purpose of creating a master plan for Bradley Park. Plans were made to reconfigure some fields to make better use of space as well as adding parking. Due to overwhelming representation from these groups, it was decided that multiple sports teams would continue to utilize the fields at Bradley. There were no other interest groups present at the workshops. This phased plan was recommended by the Community Services Commission and later approved by the City Council for sports team use only; a remote control site wasn't considered.
- Trails Advisory Committee was informed of the proposed site limitations. They wanted to explore the idea of "shared use" with sport teams at Bradley Park only. RC would only use the fields when unoccupied/no sport teams scheduled. Annual field closures/rest periods would be affected.

**City of SM doesn't recommend shared use:**

- The proposed area is not big enough; RC might encroach/use areas where not permitted, possibly causing more challenges
- This Council-approved Master Plan did not include plans for this type of activity and would need to be redesigned and then go back to Council. More studies (EIR, Palomar Airport, DFW, etc.) need to be done prior to permitting RC at Bradley
- The idea of temporary use can cause issues down the road; after users become comfortable/used to an area, it's difficult to relocate them, this could cause some type of discrimination against select groups
- The Park Ordinance would need to be changed

**City Staff Recommendation:**

To direct people to the closest field where RC flying is permitted which is on unoccupied sport fields in the City of Carlsbad's El Fuerte Park, 6889 El Fuerte St, which is 4.89 miles from Bradley Park.

City of San Marcos

**TRAILS ADVISORY COMMITTEE NOTES**

**DATE: TUESDAY August 4, 2015; TIME: 6:30 PM – 7:30PM**

PRESENT: Jim Elliot, Bill Moog, Patty Morton, Ron Vinluan (*meeting adjourned at 8:15pm*)

Guest: Sasha Smith, Gary Hill, Dawn Sitler, Steve Laslovich, Gary Hill, Matt Simmons

1. TAC Candidates (Debbie Zaleschuk & Steve Laslovich)

- \*Application due by 8/11
- \*Paragraph/summary for CSC (*reason to be on TAC*)
- \*CSC meeting *Wednesday Aug 19, 6pm*

2. Update:

- Highland Project- *Matt Simmons from CCI updated the group with the status of the project. A public workshop will be planned for the end of September*
- Bradley Park possible site for AMA club-*the TAC would like to explore the idea of shared use with the sports teams and the AMA flyers.*
- Lodge pole railing- *the group was made aware that sections of fence will be modified to provide an opening for trail users.*
- Kiosk at WG horse arena (*next meeting*)
- Grants: (3-5 goals/3-5 projects) *5 areas were identified for the grant.*

Recreation Trails Program Application Assistance Conference Call

Thursday, July 16th, from 1:00 pm to 4:00 pm  
Wednesday, August 12th, from 9:00 am to 12:30 pm

*Bill Moog will be attending the conference call on 8/12*

The Office of Grants and Local Services (OGALS) is pleased to announce that up to \$16 million is available for trail projects through the Recreational Trails Program (RTP). For more information about this program and to RSVP for upcoming conference calls, please click on the button below.

3. Project 81001; questions for Elias Gallegos (city engineer working on project) *Elias will be invited to the September meeting.*

4. HHF Patty Morton informed the committee of the upcoming Horse Heritage festival

Notes: submitted by Ron Vinluan



MAKING THE GRADE

*In just ten years*

2015

SAN MARCOS\* BI-ANNUAL

*Education Forum*

Join us for the bi-annual special forum with leaders from the City of San Marcos, San Marcos Unified School District, Palomar College and Cal State San Marcos to share ideas, plans and aspirations for the future of education in San Marcos and celebrate how far San Marcos and academics have come in just ten years since the forum was established.

Wednesday, September 16, 2015

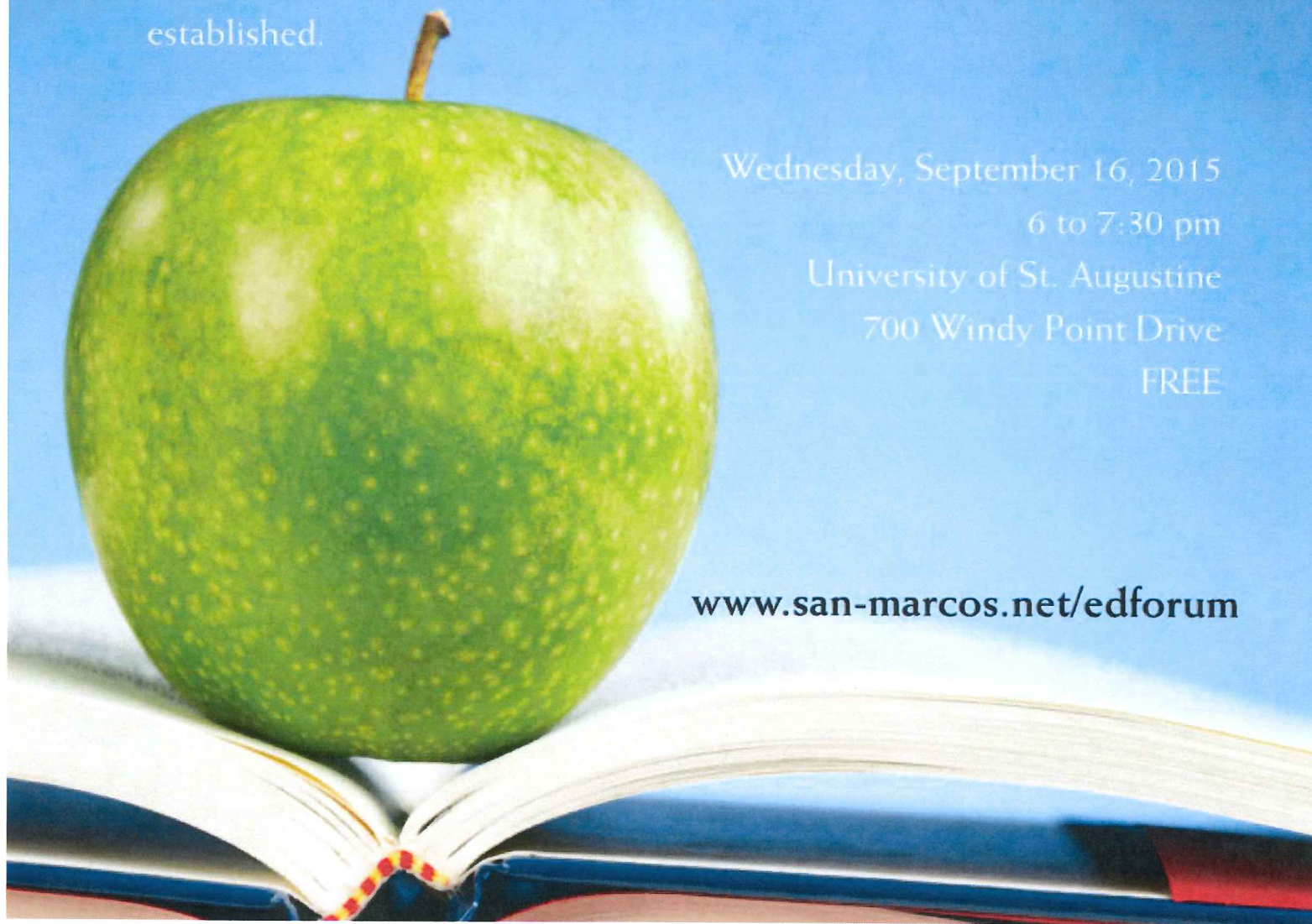
6 to 7:30 pm

University of St. Augustine

700 Windy Point Drive

FREE

[www.san-marcos.net/edforum](http://www.san-marcos.net/edforum)







# AGENDA REPORT

## Meeting of the Community Services Commission

**MEETING DATE:** August 19, 2015

**SUBJECT:** Richmar Park 83001 – Public Comment and Selection of Concept Alternative

---

### Recommendation

Staff recommends that the Commission review the staff preferred "Concept Alternative 1", receive input from the community and confirm final approval for design.

### Introduction

Richmar Park is considered as a future mini-park in the City's General Plan Park, Recreation and Community Health Element. The park is an approximately 2.3 acre area bounded by Firebird Lane on the west, Richmar Drive on the south, and Twin Oaks Valley Road to the East. The Park Master plan (attached to this report) was developed as part of community outreach in 2011.

### Discussion

On April 30, 2015 the City received nine (9) proposals for design services for Richmar Park. The City has evaluated and selected Schmidt Design Group, Inc. ("Designer").

On July 31, 2015 the City issued a flyer with the original concept and two concept alternatives to the Richmar community. The flyer requested community feedback as part of the Community Services Commission meeting.

To best meet the City's needs, the Designer has prepared two alternatives for the park. These alternatives represent concepts in-line with the original park master plan design. The construction alternatives have taken into consideration the community's needs, available funding, constraints of the site and the current drought conditions. The purpose of this meeting is to solicit public comments and provide opportunity for discussion and selection of the final construction alternative by the Commission.

### Fiscal Impact

The City has budgeted \$1,641,030 for the Richmar Park - Phase 1 (CIP 83001) project. There is \$1,407,030 budgeted for the construction of phase 1 of the park. An additional \$449,900 was granted to the City as part of the Housing-Related Parks Program grant. The newly awarded funds will be used



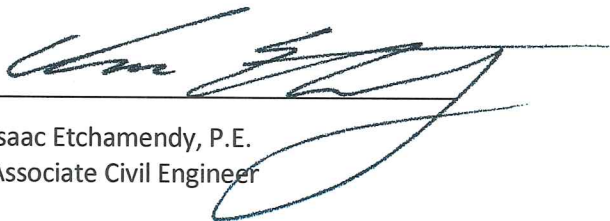
to construct the Richmar Park – Phase 2 (CIP 83002) improvements. Selection of an alternative will not create any additional fiscal impacts to the City.

---

**Attachment(s)**

Park Flyer  
Richmar Park Mater Plan (preferred alternative)  
Construction Alternative #1  
Construction Alternative #2

Prepared by:



---

Isaac Etchamendy, P.E.  
Associate Civil Engineer

Prepared by:

---

Holly Malan  
Assistant Community Services Director

Submitted by:

---

Buck Martin  
Community Services Director



# Coming Soon RICHMAR PARK

Dear Resident,

The City is building a new park in your neighborhood at the corner of Richmar Avenue and Firebird Lane. The highly anticipated Richmar Park will include play facilities, picnic areas and walking paths to bring even more recreational opportunities to the Richmar Neighborhood.

In 2011, the Community Services Commission approved a design for Richmar Park after receiving input through public workshops and community feedback.

As Richmar Park's design is fine tuned, the City's design consultant has provided two alternatives consistent with the community's original approved design. The two proposed design refinements address water conservation, sustainability and existing site constraints.

On Wednesday, August 19 the Community Services Commission will recommend one of the proposed design refinements for construction.

## You're Invited

### Community Services Commission Meeting

The City welcomes all interested parties to attend the Community Services Commission and voice any thought about the decision being brought before the Commission.

**WHEN:** Wednesday, August 19 at 6:00 pm\*  
**WHERE:** Council Chambers  
1 Civic Center Drive  
San Marcos CA 92069

For more information, please contact Associate Civil Engineer Isaac Etchamendy at (760) 744-1050, ext. 3273 or [ietchamendy@san-marcos.net](mailto:ietchamendy@san-marcos.net).

\*Any individual wishing to speak will need to fill out a speaker slip prior to the meeting.

Enclosed: Original Design (approved)  
Design Refinement #1  
Design Refinement #2





# Muy Pronto Parque Richmar

Estimado residente,

La ciudad está construyendo un nuevo parque en su vecindario en la esquina de Richmar Avenue y Firebird Lane. El gran esperado parque Richmar incluirá instalaciones de juego, áreas de picnic y veredas para traer más oportunidades de recreación al vecindario de Richmar.

En el 2011, la Comisión de servicios de la comunidad aprobó un diseño para el parque Richmar después de recibir comentarios por medio de talleres públicos y de la comunidad.

Como se perfecciona el diseño del parque Richmar, el consultante de diseño de la ciudad ha proporcionado dos alternativas consistentes con el aprobado diseño original de la comunidad. Las dos propuestas de refinamiento de diseño abordan conservación del agua, sostenibilidad y limitaciones existentes del sitio.

El 19 de agosto la Comisión de servicios de la comunidad recomendará que se construya una de las propuestas de refinamiento del diseño.

## **Esta usted invitado**

### *Junta de la Comisión de servicios de la comunidad*

La ciudad da la bienvenida a todos los interesados para asistir a la junta de la Comisión de servicios de la comunidad y expresar cualquier pensamiento acerca de la decisión que está siendo llevada ante la Comisión.

**CUÁNDO:** 19 de agosto de 2015 a las 6:00 pm\*  
**DONDE:** Council Chambers  
(Camara del Concilio)  
1 Civic Center Drive  
San Marcos, CA 92069

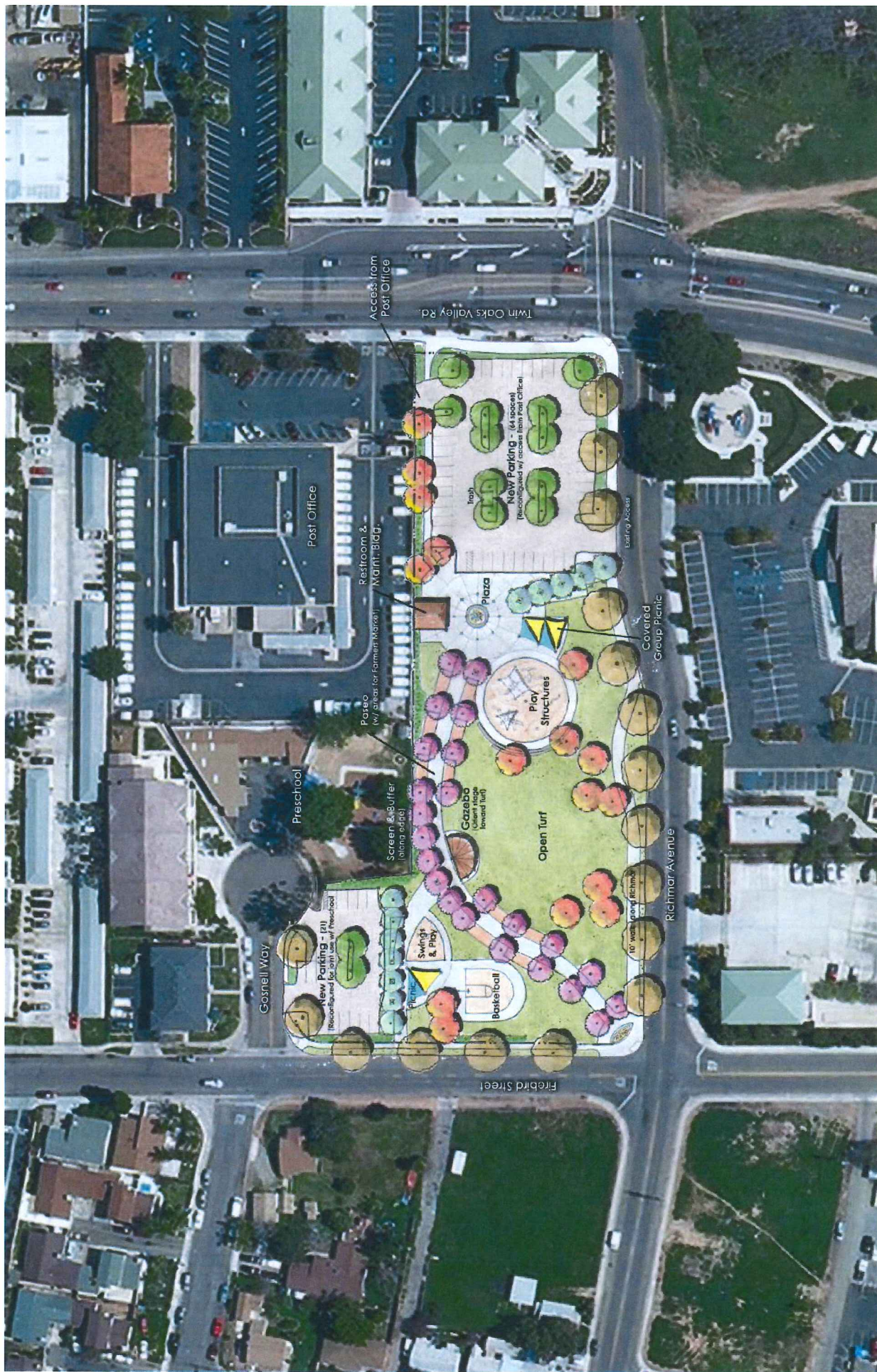
Servicios de traducción en español serán ofrecidos durante el taller.

Para obtener más información, póngase en contacto con el ingeniero civil asociado Isaac Etchamendy al (760) 744-1050, Ext. 3273 o [ietchamendy@san-marcos.net](mailto:ietchamendy@san-marcos.net).

\*Cualquier persona que desee hablar tendrá que llenar una forma de altavoz antes del comienzo de la junta.

**Adjunto:** Diseño original (aprobado)  
Refinamiento de diseño #1  
Refinamiento de diseño #2





Original Design - Diseño Original



GOSNELL WAY



#### CONCEPT SUMMARY:

This design builds upon the basic form and structure of the initial Master Plan developed by the City. This site is traversed by a wide tree-lined promenade which is interrupted by a series of circular gathering spaces. The primary entry plaza to the east welcomes visitors and offers opportunities for picnicking under a shade structure while providing access to the park's restroom facility. The large children's play area is located directly adjacent to the promenade. From the entry plaza, the promenade stretches westward and transitions into a footbridge which spans the park's bioretention area. This bridge also functions as the western gateway into the park. A flexible plaza is located in the center of the park which can function as both a picnic area and stage for community performances. A half-basketball court is located on the western portion of the park and provides additional seating and picnicking opportunities. A large turf area bounds the southern edge of the park to allow for informal play and seating for various flowering species to create a colorful, gardenesque park environment.

#### LEGEND:

- |                           |                                |                               |                        |
|---------------------------|--------------------------------|-------------------------------|------------------------|
| 1 Children's Play Area    | 5 Turf                         | 9 Planting Area               | 13 Entry Monument Sign |
| 2 Shade Structure         | 6 Raised Mound                 | 10 Raised Seat Wall Planter   | 14 Bioretention Basin  |
| 3 Decomposed Granite      | 7 Concrete Paving              | 11 Half-Court Basketball      | 15 Comfort Station     |
| 4 Integral Color Concrete | 8 Social Picnic / Seating Area | 12 Stage with Enhanced Paving |                        |

SCALE: 1" = 20'-0"

SHEET NO. 1 OF 4 PROJECT NO. 15-407

**RICHMAR PARK**  
SAN MARCOS, CA

**CONCEPT ALTERNATIVE 1**  
August 6, 2015



SCHMIDT DESIGN GROUP, INC.  
WWW.SCHMIDTDESIGN.COM





DESIGN INSPIRATION



DESIGN INSPIRATION



DESIGN INSPIRATION



LANDSCAPE CHARACTER



LANDSCAPE CHARACTER



CHILDREN'S PLAY



CHILDREN'S PLAY



SPECIMEN TREE IN RAISED PLANTER



PERFORMANCE & COMMUNITY EVENTS



SHADE STRUCTURE



FLEXIBLE LAWN



SLOPING LAWN



BRIDGE OVER BIORETENTION BASIN



BIORETENTION BASIN



HALF-COURT BASKETBALL

# **RICHMAR PARK** SAN MARCOS, CA

## **CONCEPT ALTERNATIVE 1** PRECEDENT IMAGERY August 6, 2015

SHEET NO: 2 OF 4 PROJECT NO: 15-407



SCHMIDT DESIGN GROUP, INC.  
www.schmidtgroup.com



GOSNELL WAY



TWIN OAKS VALLEY ROAD

POST OFFICE

DAY CARE

FIREBIRD LANE

RICHMAR AVE

### CONCEPT SUMMARY:

This design accommodates the various park amenities identified in the initial Master Plan developed by the City. The overall composition of this alternative is inspired by the rolling hills and low-lying valleys that are prominent throughout the City of San Marcos, including Double Peak Park. The pathways within the park reflect the rolling nature of the hills while providing access to the park's various amenities. The children's play area, half basketball court, and restroom facility frame a large community gathering space and picnic area nestled under a grove of trees. A small trail and footbridge span the park's bioretention basin and lead visitor's up an 8-foot climb to the top of the park summit. Natural play elements are integrated along the trail and offer numerous opportunities for nature-based play including climbing boulders and logs. A series of slides are proposed which connect the various levels of the trail. The eastern side of the summit functions as the backdrop for a community performance stage and gathering space covered by a signature shade structure. Terraced steps provide access down to the stage and also function as seating for intimate performances. A large turf area bounds the southern edge of the park to allow for informal play and seating for larger community performances and events. The landscape character is inspired by the hillsides surrounding San Marcos and comprised of drought tolerant and native plant species organized in informal groupings.

### LEGEND:

- |                                     |                          |                          |                           |
|-------------------------------------|--------------------------|--------------------------|---------------------------|
| 1 Children's Play Area              | 6 Raised Discovery Mound | 11 Half-Court Basketball | 16 Foot Bridge Over Basin |
| 2 Signature Stage / Shade Structure | 7 Concrete Paving        | 12 Summit                | 17 Natural Play Elements  |
| 3 Decomposed Granite Plaza          | 8 Seating Node           | 13 Entry Monument Sign   |                           |
| 4 Integral Color Concrete           | 9 Planting Area          | 14 Bioretention Basin    |                           |
| 5 Turf                              | 10 Terraced Seating      | 15 Comfort Station       |                           |

SCALE: 1" = 20'-0"



SHEET NO: 3 OF 4 PROJECT NO: 15-407

## CONCEPT ALTERNATIVE 2

August 6, 2015

# RICHMAR PARK

SAN MARCOS, CA



SCHMIDT DESIGN GROUP, INC.  
WWW.SCHMIDTDESIGN.COM





DESIGN INSPIRATION  
Discovery Lake



DESIGN INSPIRATION  
Double Peak Park



LANDSCAPE CHARACTER



LANDSCAPE CHARACTER



PLAY ON SLOPE



NATURAL PLAY ELEMENTS



CLIMBING BOULDER



CHILDREN'S PLAY



TERRACED SEATING



STAGE & SIGNATURE SHADE STRUCTURE



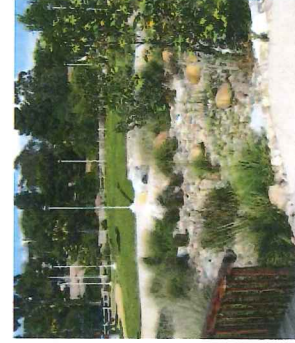
PERFORMANCE & COMMUNITY EVENTS



FLEXIBLE LAWN



BRIDGE OVER BIORETENTION BASIN



BIORETENTION BASIN



HALF-COURT BASKETBALL

# RICHMAR PARK SAN MARCOS, CA

## CONCEPT ALTERNATIVE 2 PRECEDENT IMAGERY August 6, 2015

SHEET NO: 4 OF 4 PROJECT NO: 15-407



SCHMIDT DESIGN GROUP, INC.  
WWW.SCHMIDTDESIGN.COM