

CHAPTER 12.40TRUCK ROUTESSECTIONS:

- 12.40.010 Truck Routes Established
- 12.40.020 Vehicles Subject to Public Utilities Code
- 12.40.030 Pickups and Deliveries
- 12.40.040 Vehicles Owned by a Public Utility or Licensed Contractor
- 12.40.050 Effective Subject to Proper Sign Erection on Streets Affected
- 12.40.060 Special Truck Weight Limits
- 12.40.070 Commercial Vehicle Restrictions

**12.40.010 Truck Routes Established.** No person, corporation or other organization shall use or operate any commercial vehicle over fourteen thousand pounds rated gross vehicle weight on or over any street, road or public right-of-way within the City, except on the following streets which are designated as truck routes:

1. Pico Avenue between Mission Road and San Marcos Boulevard
2. Via Vera Cruz between Grand Avenue and San Marcos Boulevard
3. Linda Vista between Grand Avenue and Rancho Santa Fe Road
4. Grand Avenue between Rancho Santa Fe Road and San Marcos Boulevard
5. Mission Road between Rancho Santa Fe Road and Barham Drive
6. South Santa Fe Road between Smilax and Rancho Santa Fe Road
7. San Marcos Boulevard between Business Park Drive and Twin Oaks Valley Road
8. Questhaven Road between Rancho Santa Fe Road and the Entrance to the San Marcos County Landfill
9. Woodland Parkway between Mission Road and Barham Drive
10. Las Posas Road between Mission Road and San Marcos Boulevard
11. Rancho Santa Fe Road between Mission Road and Melrose Drive

**12.40.020 Vehicles Subject to Public Utilities Code.** The provisions of this Chapter are not applicable with respect to any vehicle which is subject to the provisions of the Public Utilities Code Section 1031 through 1036, inclusive.

**12.40.030 Pickups and Deliveries.** This Chapter shall not prohibit any commercial vehicles coming from an unrestricted street having ingress or egress by direct route to and from a restricted street when necessary for the purpose of making pickups and deliveries of goods, wares and merchandise from or to any building or structure located on the restricted street, or for the purpose of delivering materials to be used in the actual and bona fide repair, alteration, remodeling or construction of any building or structure upon the restricted street for which a building permit has been previously obtained.

**12.40.040 Vehicles Owned by a Public Utility or Licensed Contractor.** This Chapter shall not apply to any vehicle owned by a public utility or a licensed contractor while necessary in use in connection, installation or repair of any public utility.

**12.40.050 Effective Subject to Proper Sign Erection on Streets Affected.** This Chapter shall not be effective until the appropriate signs are erected indicating those streets which are truck routes. (Ord. No. 89-813, 4-11-89)

**12.40.060 Special Truck Weight Limits.** No person, corporation, or other organization shall use or operate any commercial vehicle over ten thousand pounds rated gross vehicle weight on or over the following streets within the City:

1. Linda Vista Drive between Specialty Drive and Rancho Santa Fe Road
2. La Mirada Drive between Poinsettia Drive and Rancho Santa Fe Road
3. Virginia Place between La Mirada Drive and Grand Avenue
4. Grand Avenue west of Rancho Santa Fe Road
5. Las Flores Drive between Oleander Avenue and Linda Vista Drive
6. Oleander Avenue between Smilax Road and Las Flores Drive
7. Descanso Avenue from Las Flores Drive to a point six hundred feet easterly

(Ord. No. 2000-1080, 1-25-2000)

**12.40.070 Commercial Vehicle Restrictions.** No person, corporation, or other organization shall use or operate any commercial vehicle on or over the following streets within the City:

1. Linda Vista Drive between Specialty Drive and Rancho Santa Fe Road
2. La Mirada Drive between Poinsettia Drive and Rancho Santa Fe Road
3. Virginia Place between La Mirada Drive and Grand Avenue
4. Grand Avenue west of Rancho Santa Fe Road
5. Las Flores Drive between Oleander Avenue and Linda Vista Drive
6. Oleander Avenue between Smilax Road and Las Flores Drive
7. Descanso Avenue from Las Flores Drive to a point six hundred feet easterly

(Ord. No. 2000-1081, 1-25-2000)

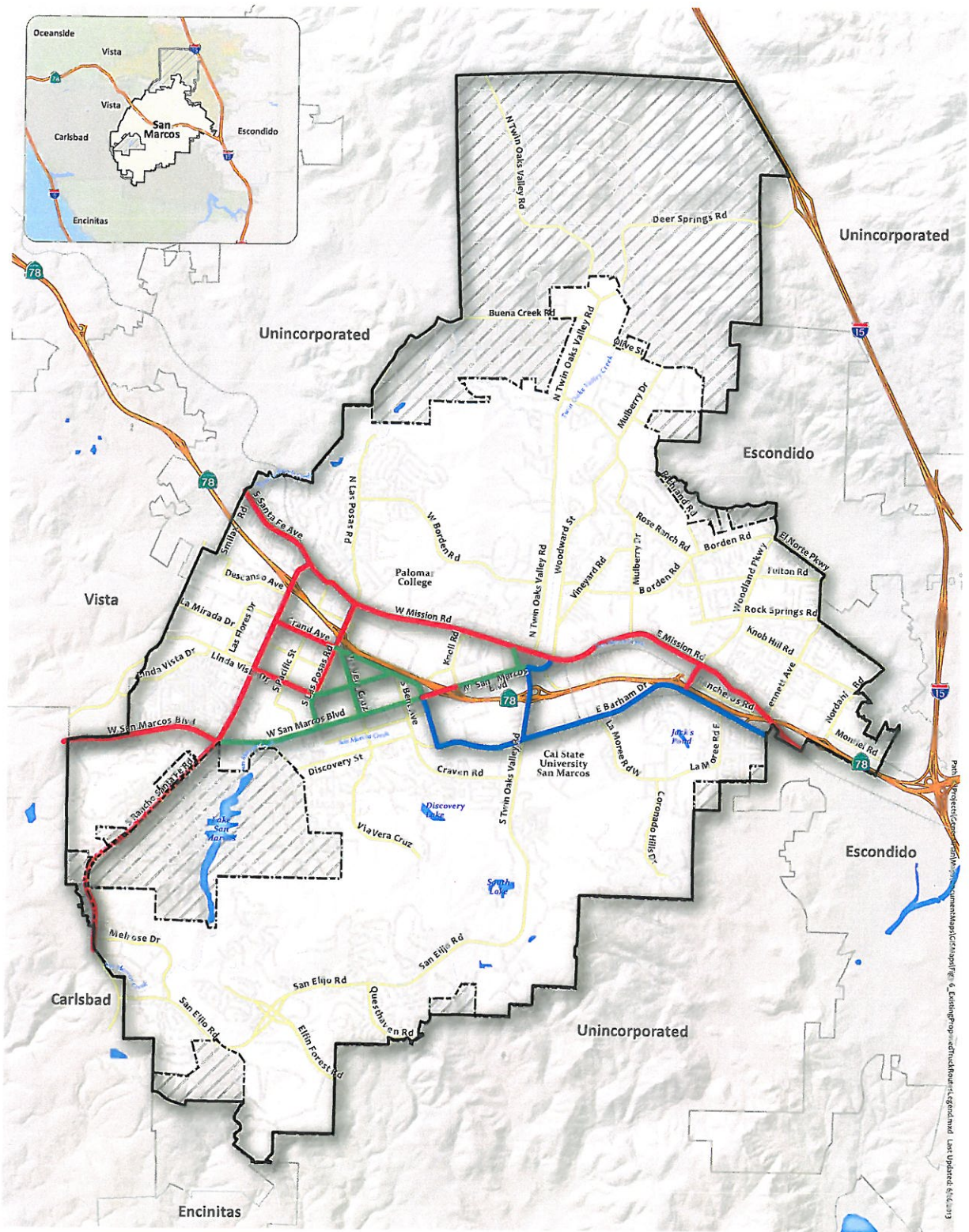
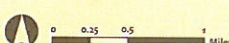


FIGURE 3-6

*City of San Marcos*  
**Existing and Proposed Truck Routes**



- San Marcos City Limits
- Sphere of Influence
- Planning Area
- Major Hydrologic Features
- Creeks
- Railroad
- Freeway
- Highway
- Major Road
- Minor Road
- Truck Routes Existing
- Truck Routes Existing to be eliminated
- Truck Routes Proposed

**SOURCES OF DATA:**  
 City of San Marcos GIS

Every effort has been made to assure the accuracy of the maps and data provided; however, some information may not be accurate or current. The City of San Marcos assumes no responsibility arising from use of this information and incorporates by reference its disclaimer regarding the lack of any warranties, whether expressed or implied, concerning the use of the same. For additional information, see the Disclaimer of the City's website.