



Kaiser Permanente San Marcos Medical Center

City of San Marcos Planning Commission
September 21, 2020



KAISER PERMANENTE

Heart of the City Specific Plan (1988)

Master Plan, SEIR, Development Agreement (1992)

Development Agreement Modification (1999)

MOB 4/ASC

MOB 1

MOBs 2-3

Discovery Street

CRAVEN ROAD

RUSH DRIVE



Project Drivers

An aerial photograph of a city, likely San Diego, with a large hospital complex in the foreground. The hospital has several large, modern buildings and a large parking lot. The city extends into the background, with mountains visible in the distance. The image is dark and has a blue tint.

Quality Care

- Provides Kaiser Permanente care to North San Diego members
- Provides state-of-the-art facilities
- Robust sequence of care on the campus that allows members and providers to address the right care in the right place

Personalized Care

- Uses new technology standards developed from the San Diego Medical Center
- Same day provider visit, urgent care or emergency service
- Connects the member to a campus that can provide an almost full breadth of healthcare services in one location

Flexible Space

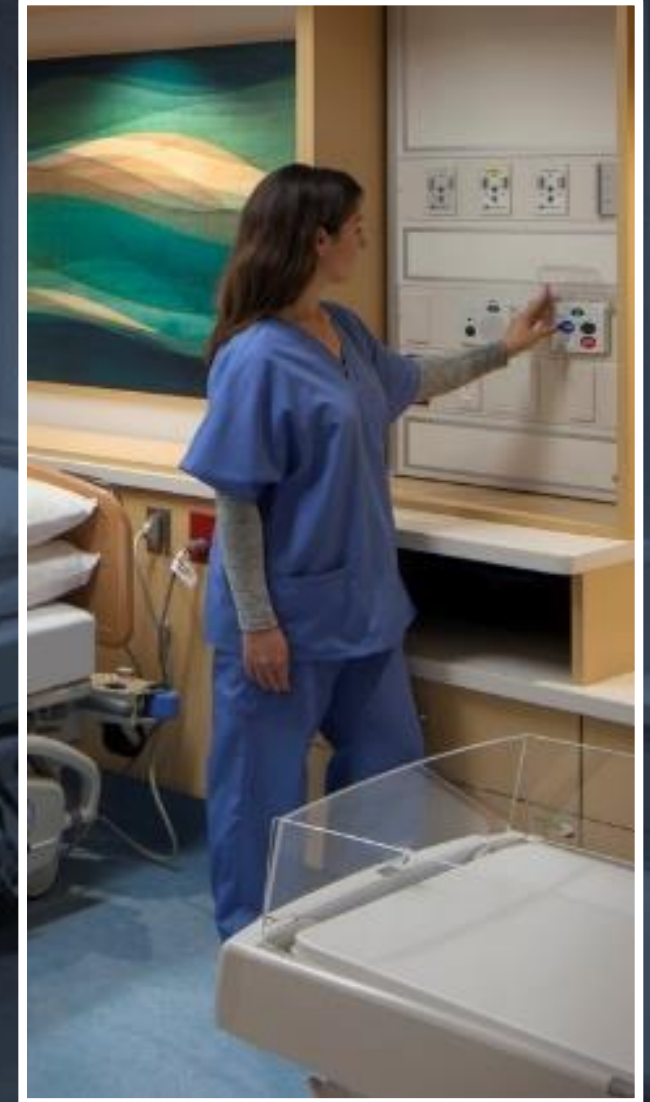
- Builds shell in and/or adjacent to bed areas to accommodate unexpected growth and/or provide space for new, unplanned services that improve care quality along the continuum

Standardization

- Leverages Hospital Center of Excellence to ensure planning, design and construction are consistent with national standards for project and construction delivery.

Scope of Services

- Cardiology
- Endocrinology
- Gastroenterology
- General Medicine
- Hematology/Oncology
- Infectious Disease
- Nephrology
- Neurology
- Pulmonary
- Rheumatology
- Dermatology
- Gynecology
- Head & Neck
- Ophthalmology
- Orthopedics
- Podiatry
- General Surgery (including breast surgery)
- Urology
- Robotic surgery
- Interventional Radiology
- Women's (OB, Delivery)
- Level II NICU
- Emergency
- Imaging



Site & Landscape Plan

206-Bed Hospital

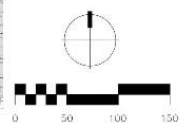
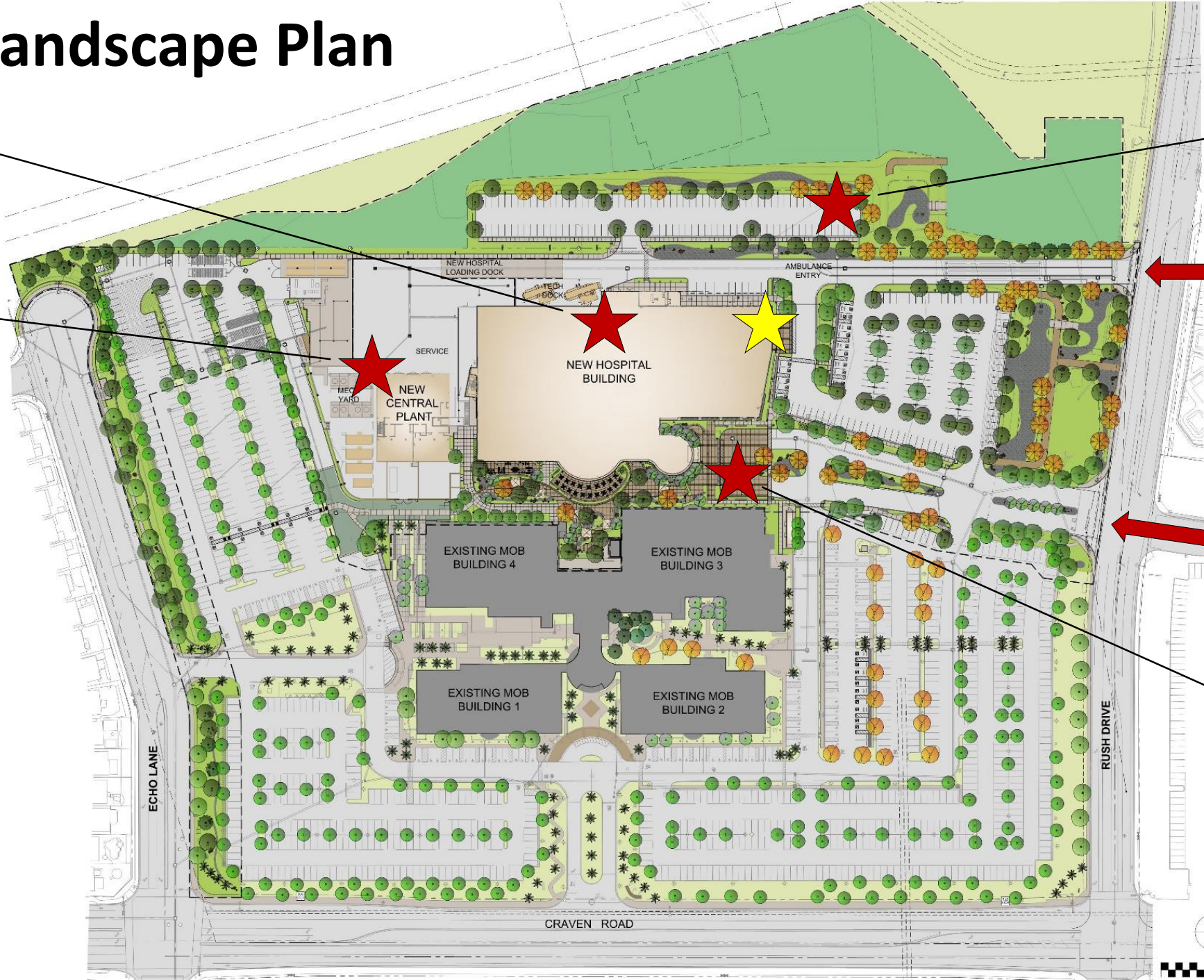
26,000 SF
Central Plant

Surface Parking

Emergency Dept &
Service Access

Primary Hospital Access

Plaza & Rotunda





Hospital Entrance



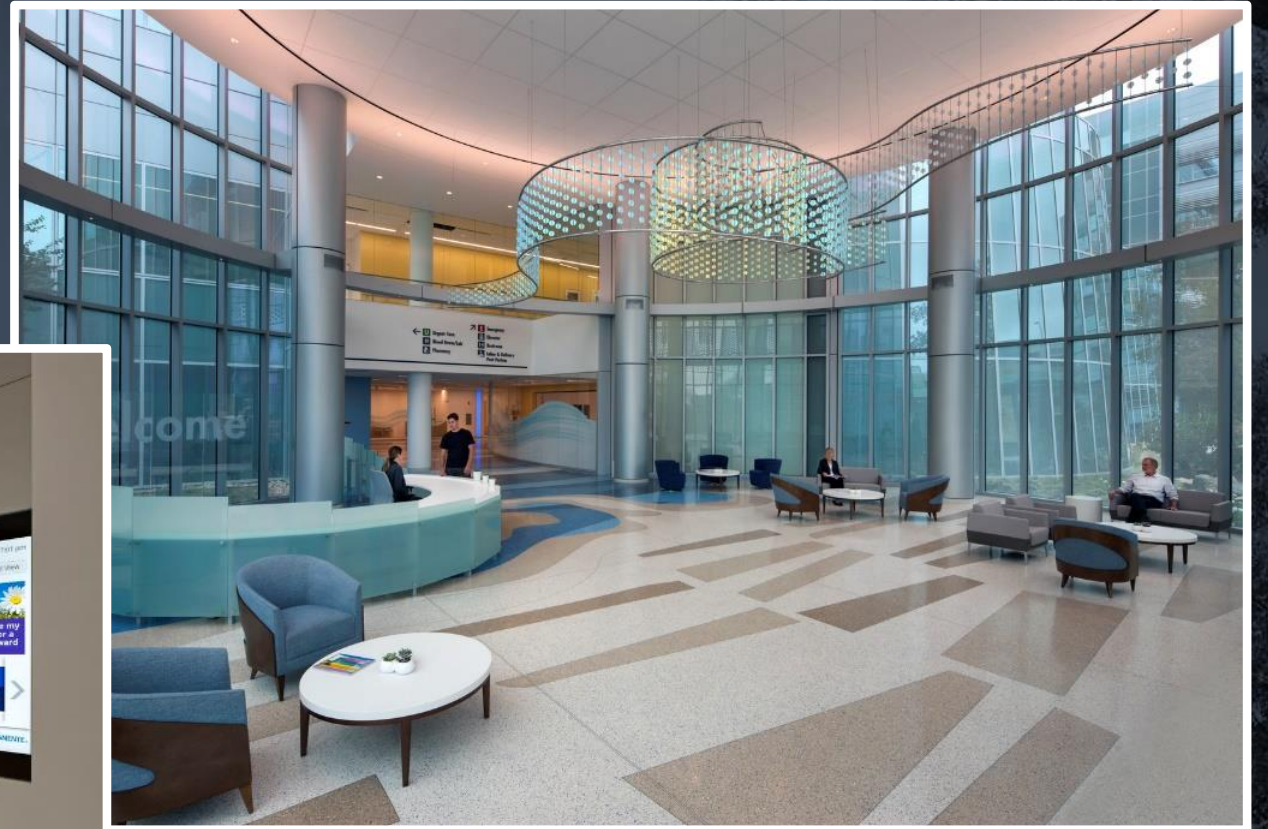


Emergency Department



Hospital Rotunda

Interiors



An aerial photograph of a cityscape. In the foreground, a large, modern white building complex with multiple wings and flat roofs is visible. It is surrounded by extensive parking lots filled with cars. The area is landscaped with palm trees and other greenery. In the background, a dense urban area stretches out towards distant mountains under a clear sky. A text box is overlaid on the left side of the image.

Existing & Future Single & Multi-Family Residential

CRAVEN ROAD

RUSH DRIVE

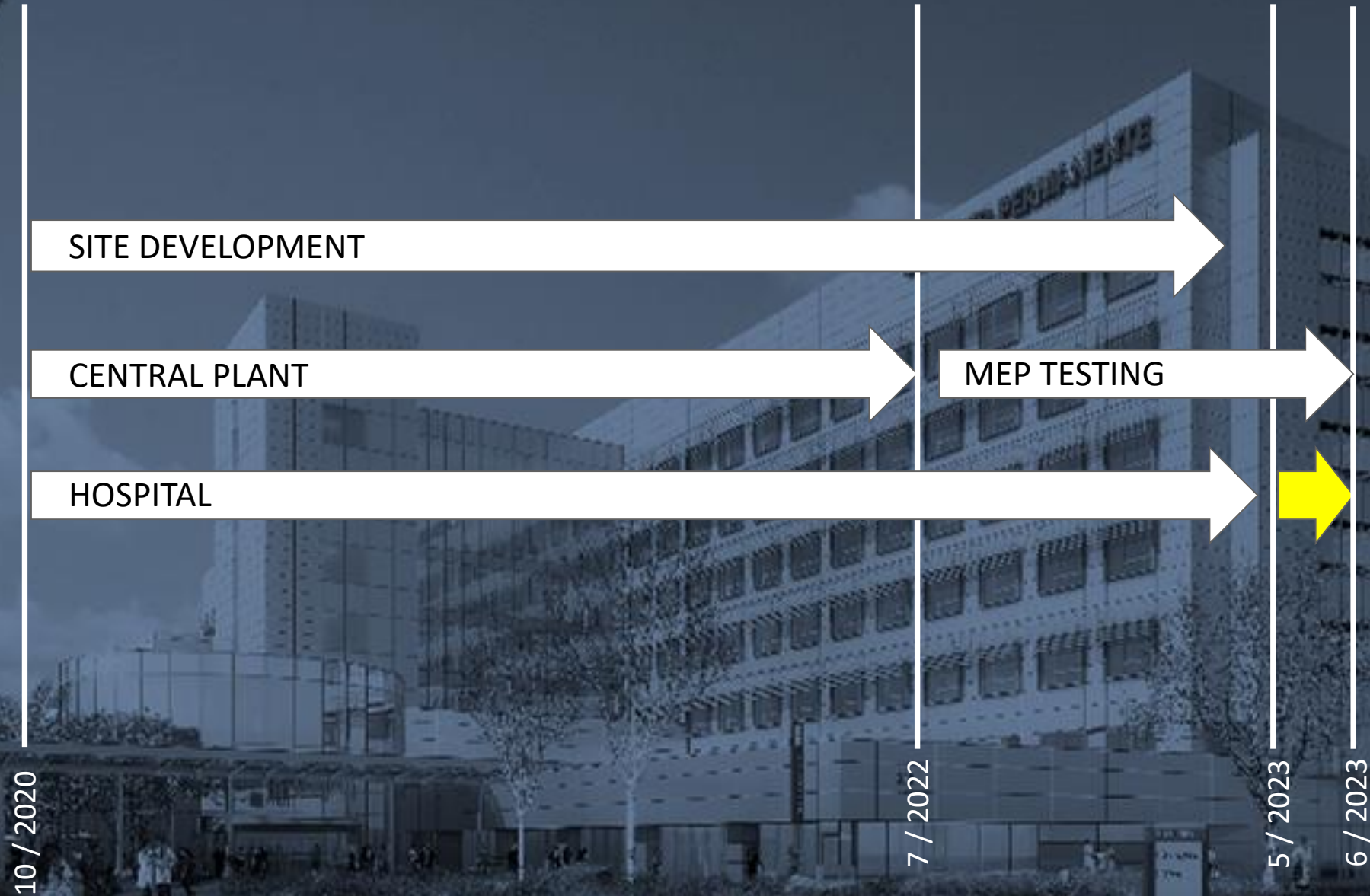
Key Plan

Echo Lane Frontage





Schedule



Commitments Kept

- Expand on our continued commitment to the North County with an integrated Kaiser Permanente medical center campus
- Payment of Public Facilities Fee in excess of \$10,000,000
- Annexation into Community Facilities Districts 98-01, 98-01, and 2011-01 to fund critical infrastructure and emergency services citywide
- Hospital phase will generate more than 500 permanent new jobs and 500 construction jobs

Summary

- Reduce the need for Kaiser members to travel outside the City for medical services by increasing the types and capacity of medical services available at the San Marcos Medical Center campus
- Connects the member to a campus that can provide an almost full breadth of healthcare services in one location
- A comprehensive range of high-quality health care services in a state-of-the-art, **environmentally considered**, advanced-care medical center
- Foster the creation of employment opportunities within San Marcos to improve the jobs/housing balance within the City and the surrounding area

