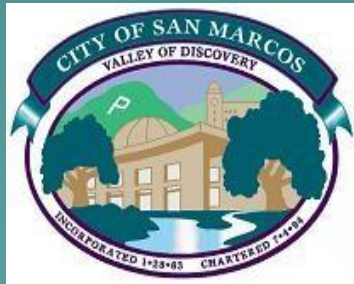



Upper San Marcos Creek/Lake San Marcos Nutrient Phase I- Diagnostics Final Draft Public Participation Plan Public Workshop


January 18, 2012



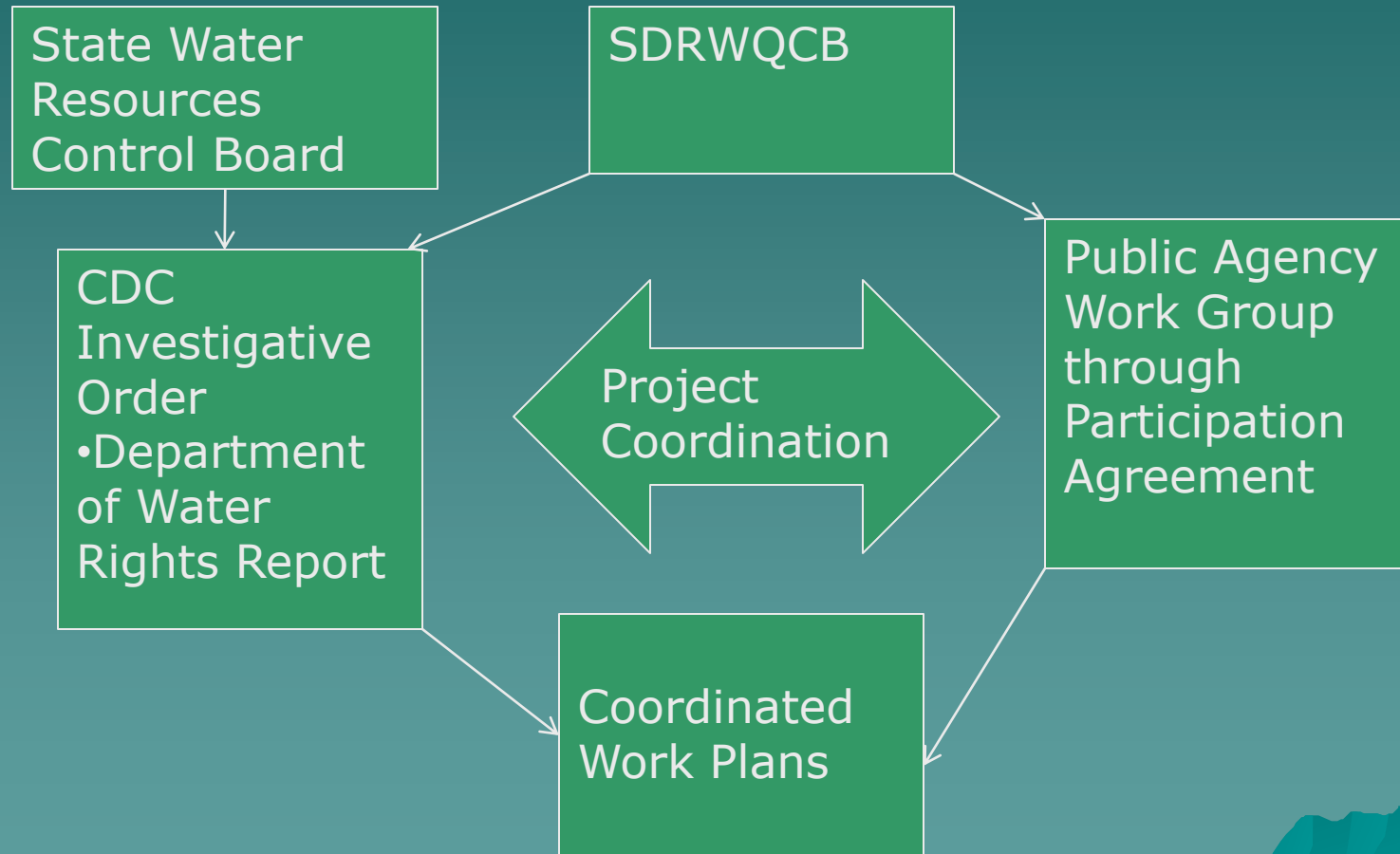
Workshop Agenda

- ◆ Introductions
 - ◆ Project Coordination
 - ◆ Final Draft Public Participation Plan Overview
 - ◆ Upper San Marcos Creek/Lake San Marcos Status Update
- 
- A stylized, layered mountain range graphic in shades of teal and blue, located in the bottom right corner of the slide.

Introductions

- ◆ Laurie Walsh, PE - SDRWQCB
 - ◆ Erica Ryan, City of San Marcos
Stormwater Program Manager
 - ◆ Reed Thornberry, City of San Marcos
- 
- A stylized, dark teal silhouette of a mountain range is positioned in the bottom right corner of the slide, partially overlapping the text of the last bullet point.

Project Coordination



PARTICIPATING PUBLIC AGENCY WORK GROUP

City of San Marcos – Lead Agency

County of San Diego

City of Escondido


Caltrans District 11

Vallecitos Water District

San Marcos Unified School District

A stylized, dark teal silhouette of a mountain range is positioned in the bottom right corner of the slide, partially overlapping the text area.

Public Participation Plan (PPP) Overview

- ◆ Requirement of Participation Agreement with SDRWQCB
 - ◆ Purpose: Keep Public Informed and Involved During the TMDL Process
 - ◆ Educate Public on How Key Decisions Affect Water Quality
- 
- A stylized, layered mountain range graphic in shades of teal and blue, located in the bottom right corner of the slide.

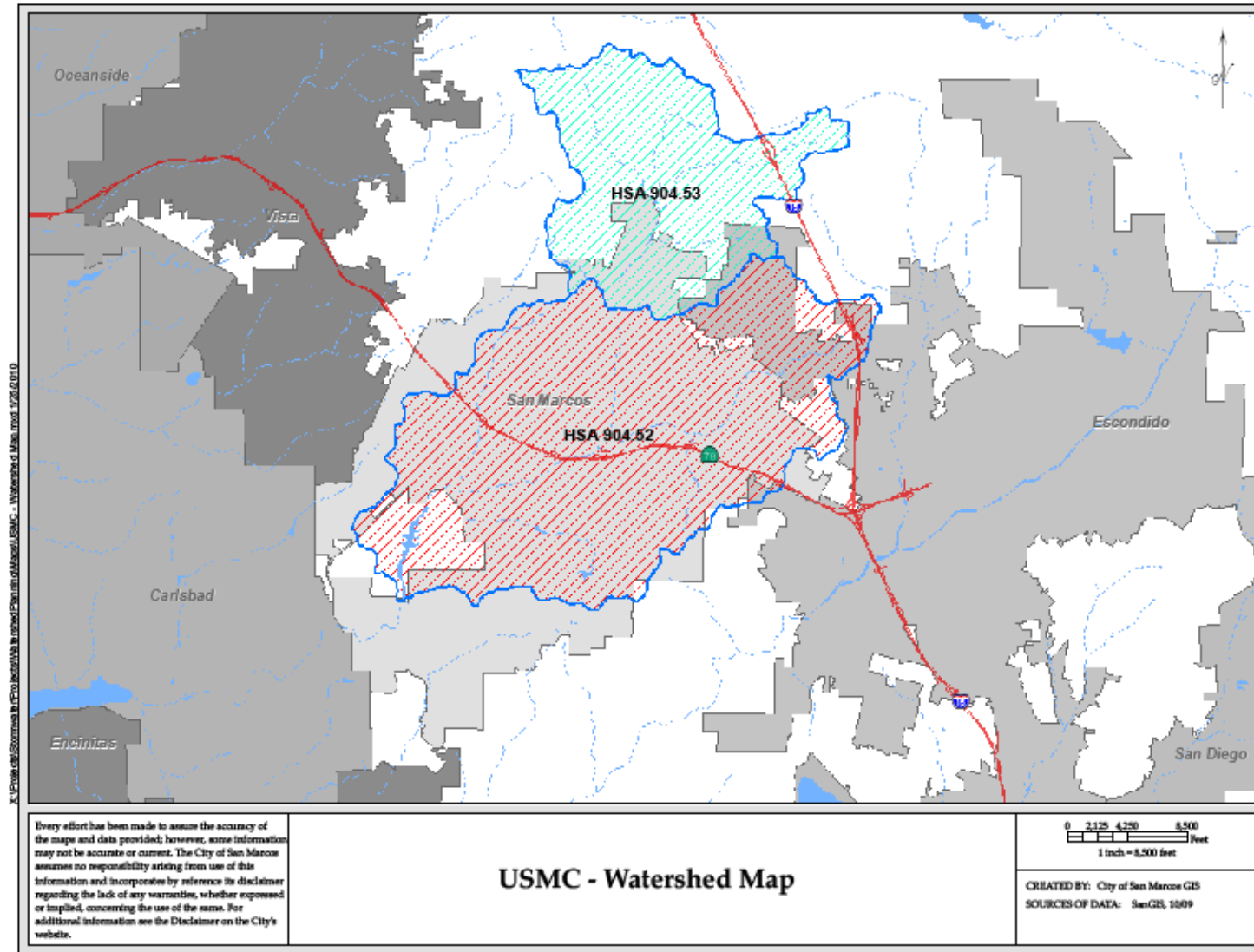
Public Participation Plan (PPP) Overview

- ◆ Key Milestones during work Phases for Public Input –
 - Work Plan
 - Data Collection/Modeling Results
 - Draft Report

Public Participation Plan (PPP) Overview

- ◆ Frequency of Workshops: Quarterly
- ◆ Outreach Methods:
 - SDRWQCB Lake San Marcos Lyris List
 - City of San Marcos Website:
 - <http://www.ci.san-marcos.ca.us/>
 - ◆ City Manager – Stormwater - watershed

USMC Watershed Map



Project Status Update

- ◆ Public Agency Work Group –
 - ◆ Watershed Diagnostics and Modeling
 - ◆ Overall Technical Project Coordination
- ◆ CDC – Lake Data and Management Data for Model Input


Project Status Update

- ◆ Funding – Public Work Group
 - ◆ EPA \$90,000
 - ◆ Public Agency Funds (\$360k)
 - ◆ Proposition 84 Application
 - ◆ Schedule:
 - ◆ 2 year Project – Feasibility Study
Summer 2013

Project Status Update

- ◆ Funding – Public Work Group
 - ◆ EPA \$90,000
 - ◆ Public Agency Funds (\$360k)
 - ◆ Proposition 84 Application
 - ◆ Schedule:
 - ◆ 2 year Project – Feasibility Study
Summer 2013

Project Status Update

- ◆ In process:
 - ◆ Coordination with CDC Work Plan
 - ◆ Dr, Anderson Third Party Review and Coordination
 - ◆ Groundwater Testing in Watershed
 - ◆ Watershed Work Plan Consultant RFP February 2012
 - ◆ Ongoing Water Testing in Watershed
- 
- A stylized, dark teal silhouette of a mountain range is positioned in the bottom right corner of the slide, partially overlapping the text area.

◆ Questions?